

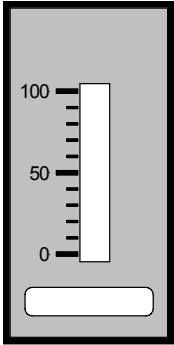
Bargraph Indicator direct voltage, direct current

- Standard: bar or dot indication
- Allows to be placed side by side in grid and mosaics systems
- Mounting into panels with thickness up to 50 mm

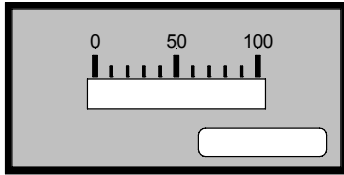
48x24

72x24

BVO1.001.776B



BHO1.001.776B



ORDER NUMBER OF TYPE

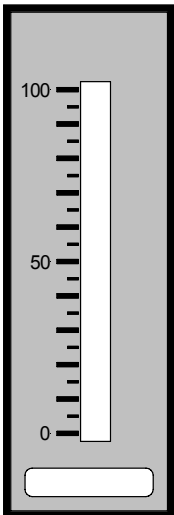
Power supply 24 VDC (48x24 vertically)

BVO 1.001.776B

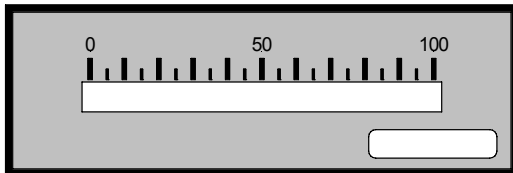
Power supply 24 VDC (48x24 horizontally)

BHO 1.001.776B

BVO2.001.576B



BHO2.001.576B



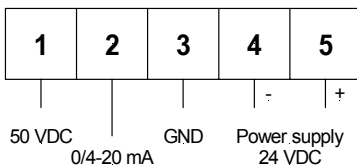
Power supply 24 VDC (72x24 vertically)

BVO 2.001.576B

Power supply 24 VDC (72x24 horizontally)

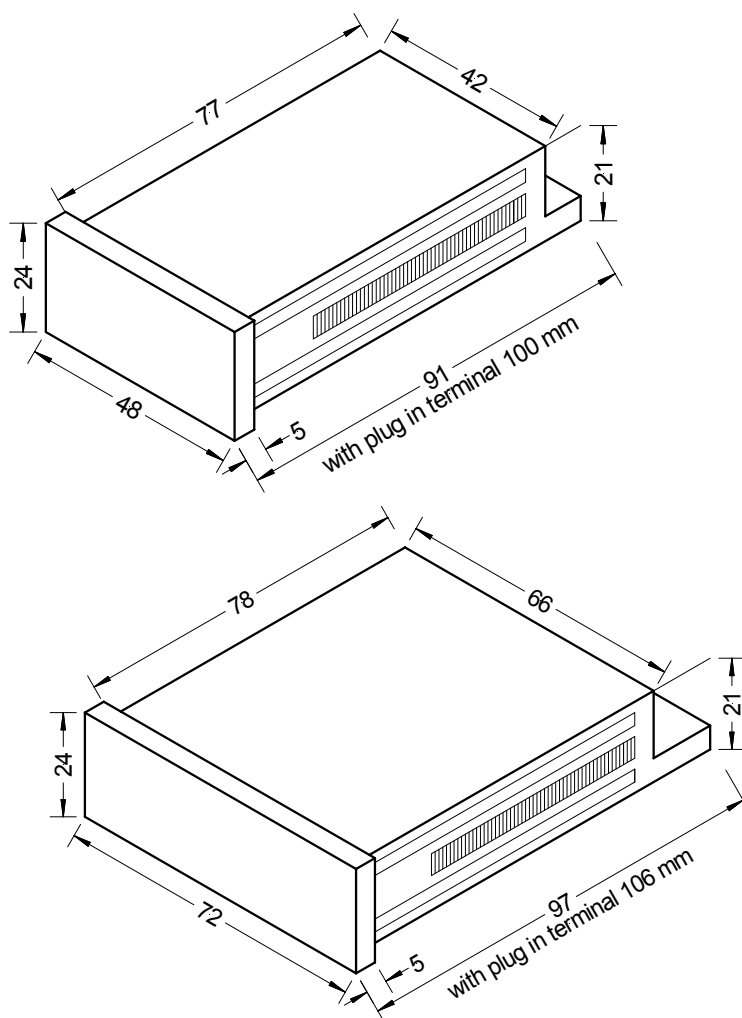
BHO 2.001.576B

Connection



Technical data

Dimensions	Housing	72 x 24 x 106 mm, including screw terminal	
	Assembly cut out	68 ^{+0.7} x 22.2 ^{+0.3} mm	
	Housing	48 x 24 x 100 mm, including screw terminal	
	Assembly cut out	45.0 ^{+0.6} x 22.2 ^{+0.3} mm	
	Fastening	special quick plastic clamp proper to fix in wall thickness up to 50 mm	
(72x24) (48x24)	Housing material	PC/ABS-plastics blend, colour black, UL94V-0	
	Protective system	at the front IP40 connection IP00	
Input	Weight	approx. 80 g approx. 60 g	
	Connection	at the rear side via plug in terminal up to 1.5 mm ²	
	Measuring range	0...50 V (U _{min} =5 V, U _{max} =60 V); 0/4...20 mA (I _{min} =8 mA, I _{max} =25 mA) all ranges are selectable via connection terminal / offset adjustment supported by offset potentiometer	
Accuracy	Input resistance	R _i with 50 V = 100 K Ω 20 mA = 100 Ω	
	(72x24)	Resolution	20 digit
	(48x24)	Resolution	10 digit
		Measuring fault	+/- 1 digit
		Temperature drift	100 ppm/K
Power unit	Supply voltage	24 VDC +/-10 % galvanic insulated	
	Power consumption	approx. 1.5 VA	
Indication	Display	bar indication 20 digit red / optionally green	
	Display	bar indication 10 digit red / optionally green	
Ambient conditions	Working temperature	0 up to + 60 °C	
	Storing temperature	-20 up to + 80 °C	
Housing:			



CE-sign

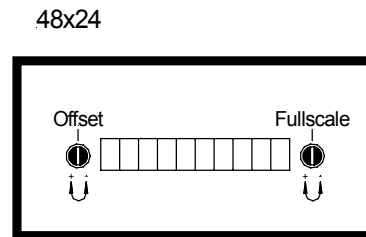
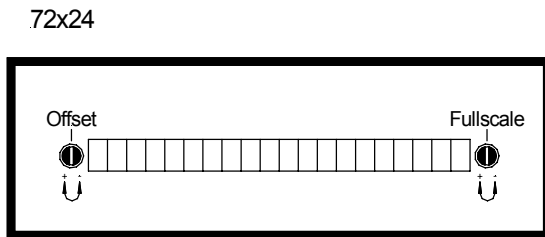
For unlimited use of the instrument within the directives for electromagnetic compatibility 89/336/EC analogue input wires have to be used with shielded cable and cable's shield connected to earth ground at one end only.

Handling, connection diagrams

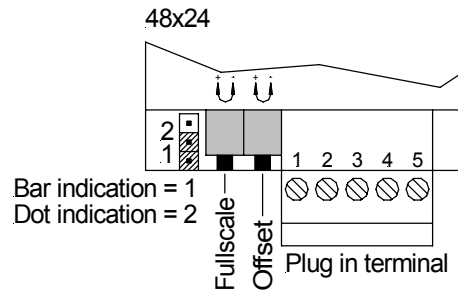
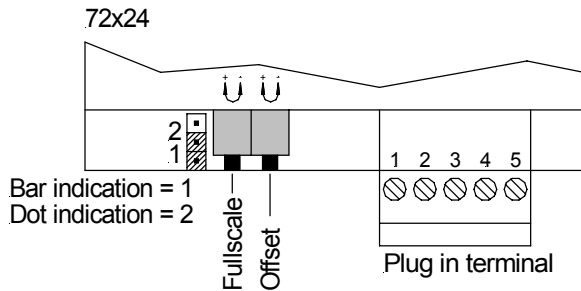
Description:

1. Connect the instrument according to the wiring diagram and turn power on.
2. Setting of display value in the case of **IP40** and **IP54**: Detach the front pane with a small screwdriver leading between front panel and housing frame.
3. Set the desired offset value (input voltage/current) and adjust the desired indication value by means of the offset potentiometer.
4. Set the desired full scale value (input voltage/current) and adjust the desired indication value by means of the full scale potentiometer.
5. In order to achieve a full display a least tension of 5 V and/or least current of 8 mA is required at the measuring inputs.
6. Insert front pane cautiously again. (it only applies to IP40 and IP54)

Setting options front side (IP40 and IP54)



Setting options rear side (IP65)



Connection diagrams

2-wire: 4-20 mA

3-wire: 0-20 mA
4-20 mA

3-wire: 0-10 V/0-5 V
1-6 V

