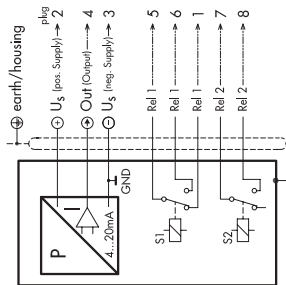
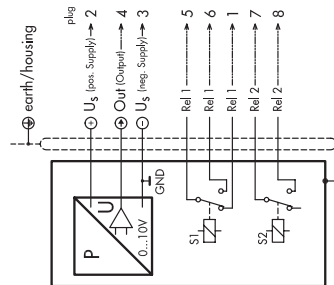


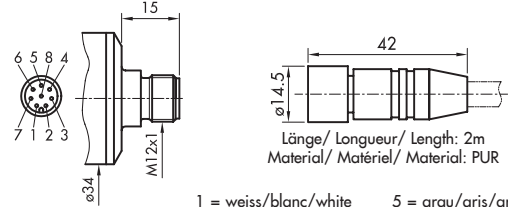
Elektrischer Anschluss / Raccordement électrique / Electrical connection



**4...20mA / 2 relays
8864.XX.XXXX.XX.19.23**



**0...10 VDC / 2 relays
8864.XX.XXXX.XX.17.23**



Länge/ Longueur/ Length: 2m
Material/ Matériel/ Material: PUR

- 1 = weiss/blanc/white
- 2 = braun/brun/brown
- 3 = grün/vert/green
- 4 = gelb/jaune/yellow
- 5 = grau/gris/grey
- 6 = rosa/rose/pink
- 7 = blau/bleu/blue
- 8 = rot/rouge/red

Abschirmung/écran/shield:
an Mutter/dans écrou/on screw

DCS CON

Output	Load resistance	U _{SUPPLY}
4 ...20mA	≤250W	10 ...30 VDC
0 ...10 VDC	≥5.0 kW	15 ...30 VDC

Ausgang

2 Relais: galvanisch getrennt, 30W (max.1A) 36 VAC/DC; switching time: 5...9999ms, einstellbar
Analog: 4...20mA (opt. 0...10 VDC)
Anzeige: beleuchtetes LCD-Display, 4 Digit Auflösung: ≤0.2% d.S. Anzeige -5...125% d.S.

Sortie

2 Relais: isolés galvaniquement, 30W (max.1A) 36 VAC/DC; temps de réponse: 5...9999ms, ajustable
Analogique: 4...20mA (opt. 0...10 VDC)
Indication: Affichage LCD rétroéclairé, 4 Digits résolution: ≤0.2% E.M. indication -5...125% E.M.

Output

2 Relay: electrically isolated, 30W (max.1A) 36 VAC/DC; switching time: 5...9999ms, adjustable
Analogue: 4...20mA (opt. 0...10 VDC)
Display: back-lit LCD-display, 4 Digits resolution: ≤0.2% FS display -5...125% FS

Anziehdrehmoment Druckanschluss / Couple de serrage raccord de pression / Torque moment pressure connection

max. 25Nm

Betriebs- & Lagertemperatur / Température de service & stockage / Operating- & Storage temperature

-25°C ... +80°C

(Betriebstemperatur/ Température de service/ Operating temperature: LCD Display aktiv/ actif/ active -10...70°C)

Medientemperatur / Température du fluide / Media temperature

-25°C ... +125°C

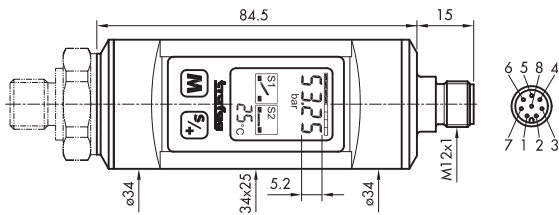
Schutzart / Protection / Protection

IP65 nur mit vorschriftsmässig montierter Kabeldose gültig
valable seulement avec fiche femelle montée selon instructions
provided with female connector is mounted according to instructions

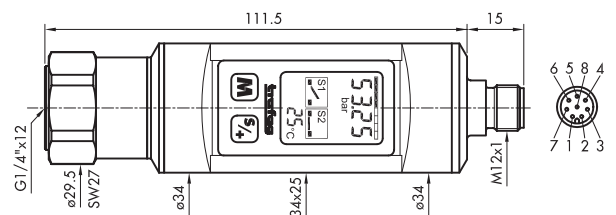
Betriebsdruck / Pression de fonctionnement / Operating pressure

Bereich	0 ... 1.0	Überdruck	max.	2
Plage	0 ... 2.5	Surpression		5
Range	0 ... 4.0	Over pressure		8
	0 ... 6.0			12
bar	0 ... 10.0	bar		20
	0 ... 16.0			32
	0 ... 25.0			50
	0 ... 40.0			80
	0 ... 60.0			120
	0 ... 100.0			200
	0 ... 160.0			500
	0 ... 250.0			500
	0 ... 400.0			800
	0 ... 600.0			1200
	0 ... 1000.0			1800
	0 ... 1600.0			3000
	0 ... 2000.0			3000

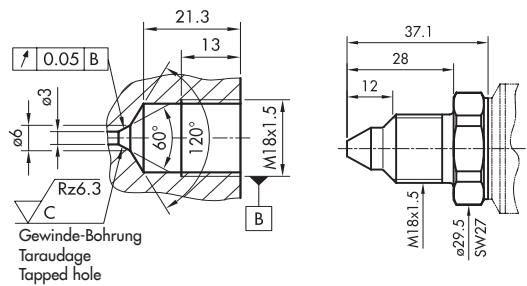
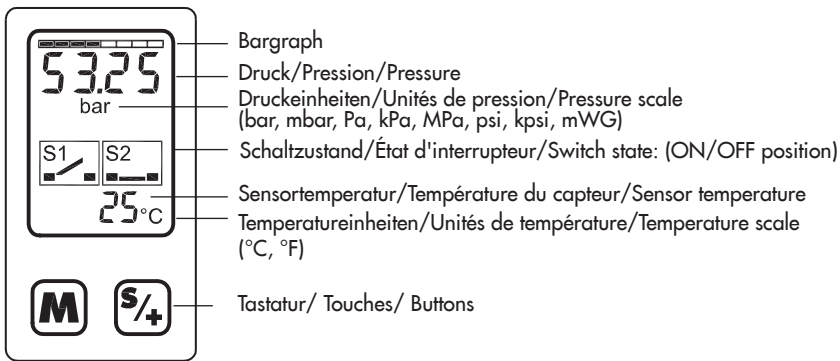
Massbild / Cotes d'encombrement / Dimensions



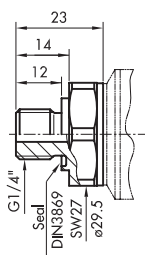
8864.XX.23XX.XX.XX.XX



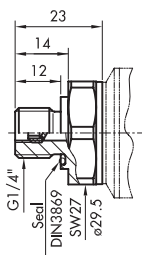
8864.XX.2610.XX.XX.XX
8864.XX.2310.XX.XX.XX



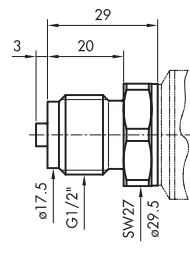
8864.XX.2329.XX.XX.XX



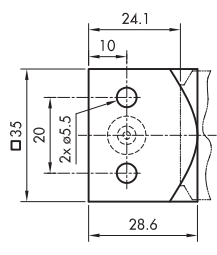
8864.XX.2317.XX.XX.XX



8864.XX.2315.XX.XX.XX



8864.XX.2311.XX.XX.XX

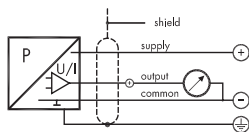


8864.XX.2341.XX.XX.XX

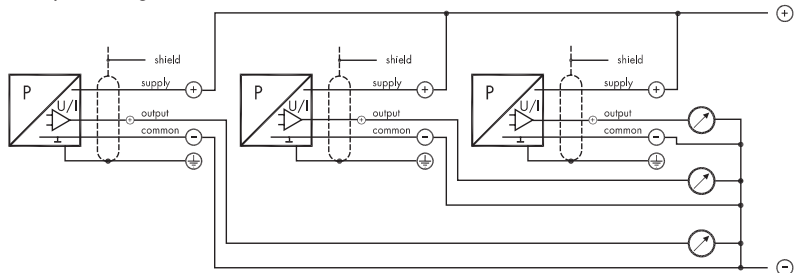
Anschluss von / Connectique de / Connection of

single arrangement

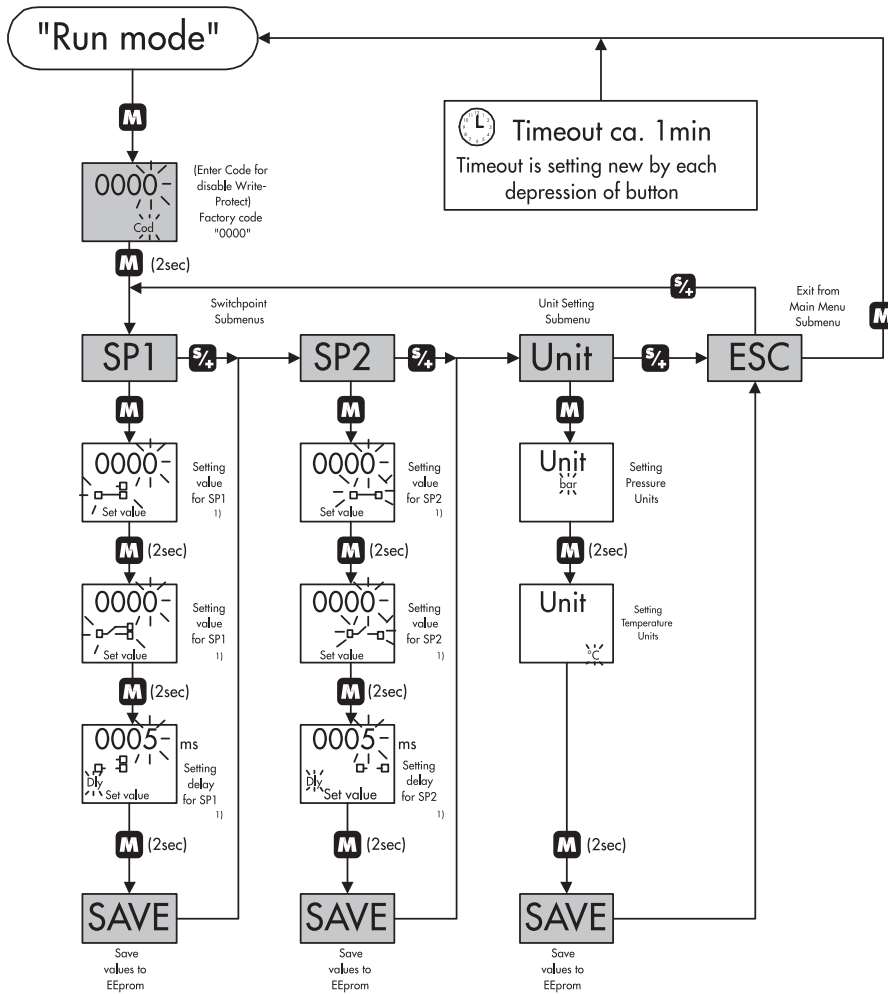
I/U-OUT 3-wires



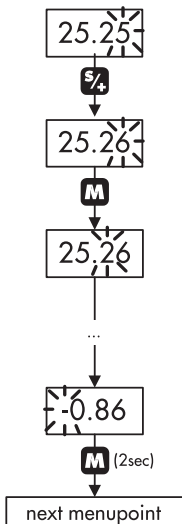
multiple arrangement




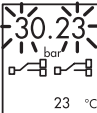

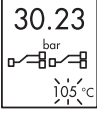
Menu



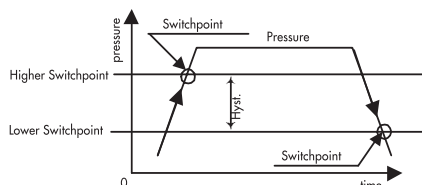
1) **Setting of numerical values**






Error list

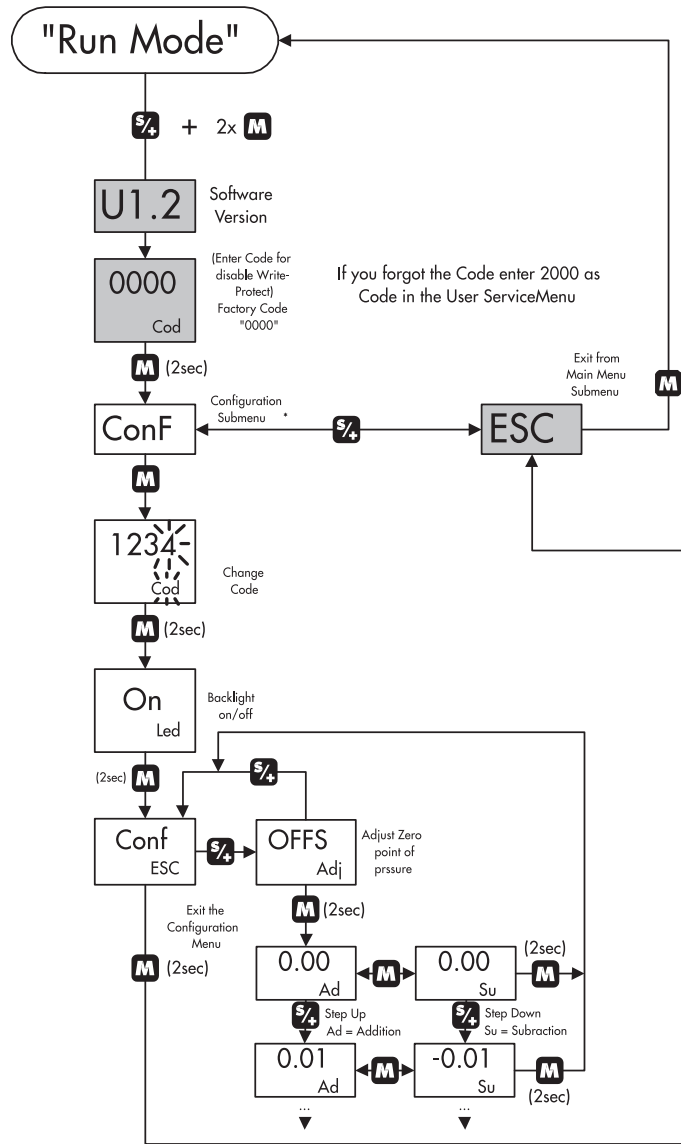
Menu	Run mode
 Value out of range	 Pressure out of Range
 Hysteresys under 1% of Range	 Temperature out of Operating Temperature

Switchpoint definition

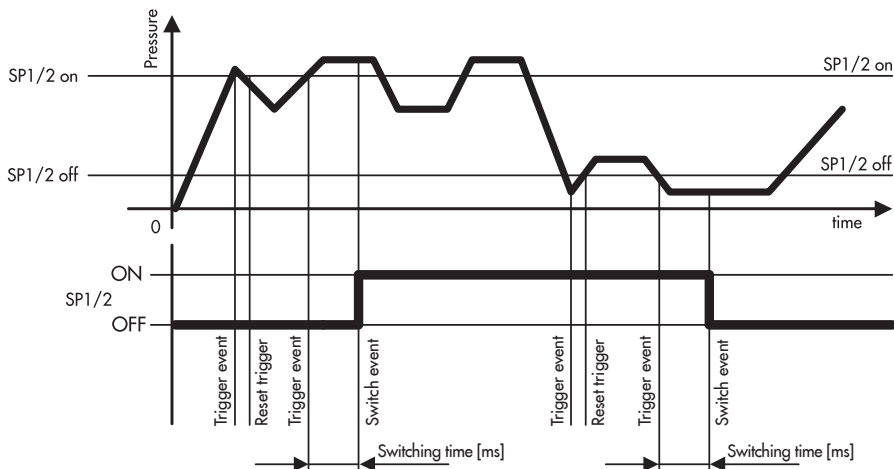


Legend

-  Press this button to set values or scrolling menu
-  Press this button to step to next digit or select submenu
-  Press this button for 2sec to step to next menu point



Switching time (Delay) (free programmable from 5ms ... 9999ms)



Legend

- $\%$ Press this button to set values or scrolling menu
- M** Press this button to step to next digit or select submenu
- M (2sec)** Press this button for 2sec to step to next menu point